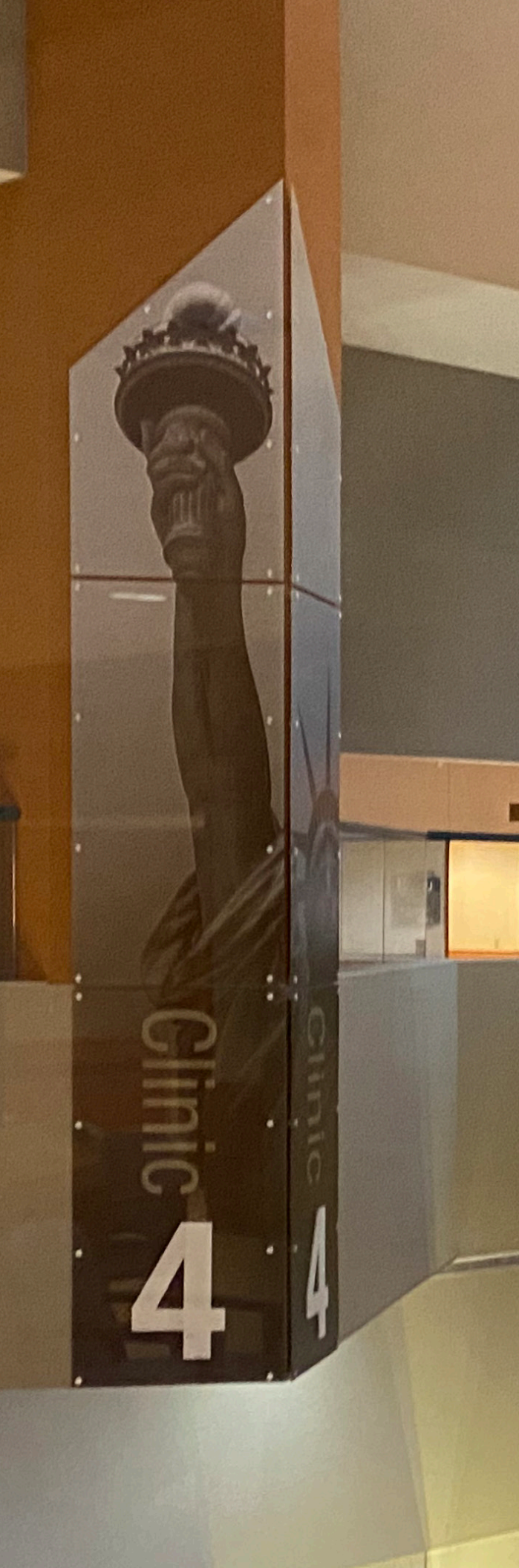


# GOVERNMENT HEALTHCARE

WAYFINDING

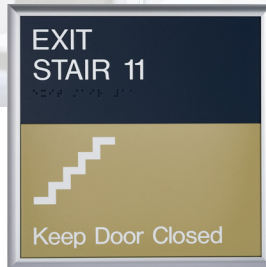
DESIGN  
PLANNING  
SIGNAGE  
INSTALLATION  
MAINTENANCE







SLIDE



FAI



FRAME

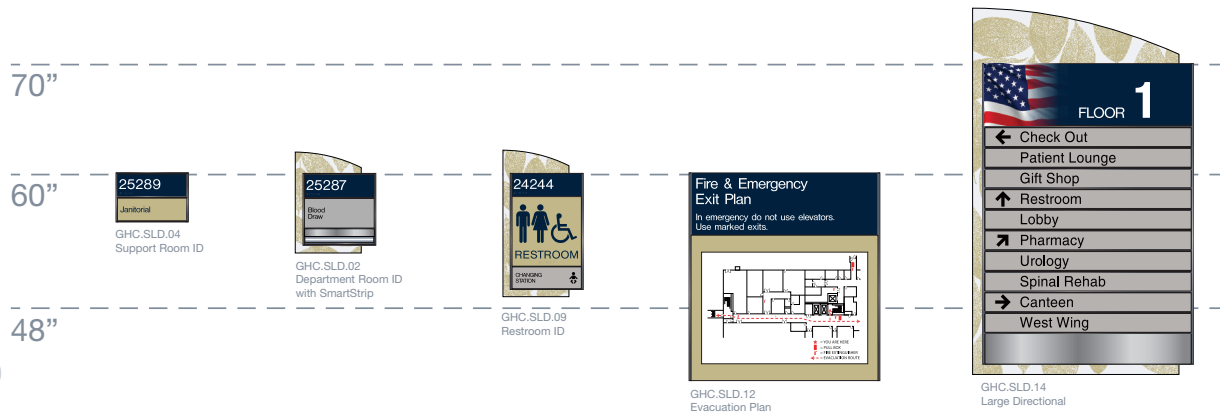
## TURNKEY WAYFINDING SOLUTIONS.

**2/90 Sign Systems is a leading signage manufacturer with a proven history of successfully implementing design-build facility signage programs for Government healthcare clients throughout the United States.**

**HELPING PEOPLE FIND THEIR WAY.** Hospital visitors and patients have a lot on their minds. Navigating a complex medical facility should not be one of them. 2/90 has over 40 years of experience in helping our clients solve their facility signage challenges. Our design-build approach offers a holistic signage experience for patients, visitors, and staff while providing superior product solutions for the built environment.

Through our collaborative design build process, 2/90 specializes in developing signage programs that complement the architectural aesthetic while solving unique communication challenges with identification, wayfinding, life-safety, medical regulatory and informational messaging. 2/90's modular signage systems and turnkey services offer a sustainable product solution to reduce facility maintenance costs and improve patient satisfaction through positive facility experiences.

# DESIGN & PLANNING



**THE ESSENTIAL FIRST STEP TO A SUCCESSFUL NAVIGATION SYSTEM.** The true measure of a successful wayfinding program is simply how well it works on several levels. The process begins with 2/90's planning service utilizing professional expertise, industry best practices, knowledge of architecture, and awareness of ADA and building code requirements. 2/90's team of planners and environmental graphic designers collaborate with client stakeholders to create solutions that satisfy long-term needs for efficient building navigation, sign durability, adaptability to change, ease of maintenance with re-orders, and ADA and building code-compliance.

## THE PROCESS.

### Data Collection

- Information gathering from client stakeholders
- Site surveys, user-group interviews
- Client review and feedback

### Schematic Sign Design

- Interior, Exterior, and Digital
- Sign mock-ups
- Client review and feedback
- 

### Development of Sign Standards

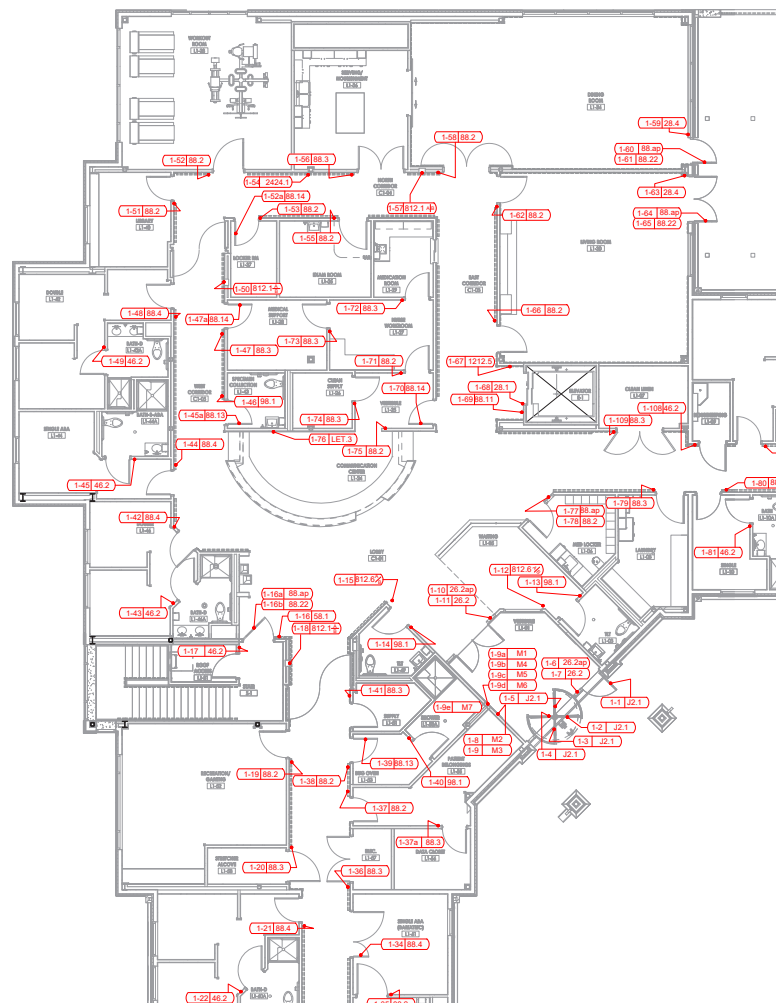
- Finishes, fonts, graphic symbols
- Sign type drawings with technical specifications
- Message schedules
- Sign location plans
- Client review and feedback

### Sign Program Manual Deliverable

- Supports initial project implementation
- Serves as a long-term continuity resource

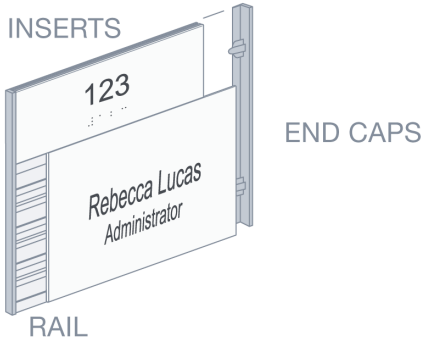
### Budget Preparation

- Interior and exterior signage
- Installation



# INTERIOR SIGNAGE

**THREE MODULAR SIGN SYSTEMS TO MEET YOUR NEEDS.** 2/90 signs are sustainable by design; when the message changes, simply replace the insert, not the entire sign. We manufacture our interior sign systems in-house, guaranteeing consistent quality and timely delivery for every order. A full-line of standard products, quick-ship options, and custom capabilities provides solutions for any application. We also support our modular signage with perfectly matched replacement inserts.

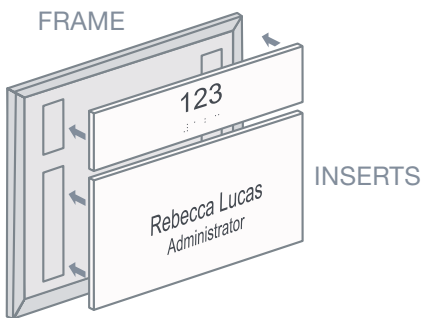
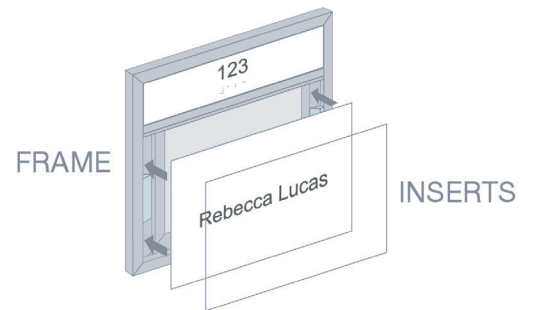


## SLIDE®

2/90 SLIDE is the most diverse modular signage system on the market. Precisely engineered componentry consisting of structural rail, inserts, and end caps offers endless functional and aesthetic design solutions. Information can be updated, signs can be expanded, and inserts can be rearranged. Superior design blended with precision engineering equals a modular signage system that leads the industry.

## FRAME®

2/90 FRAME is a picture-perfect solution for the new VA Design Manual's "flex-fit" component-based sign system. 2/90 Frame accommodates front-loading inserts that fit securely in a precision-built frame assembly with hidden spring clips. Each component within the frame system can be replaced, reconfigured, or updated so the sign can evolve with facility changes.



## FAI®

2/90 FAI is a timeless classic. A frame and insert system that features an FSC Certified hardboard structural backer, a precision mitered corner frame detail, and front-loading changeable inserts, FAI offers the flexibility of a modular system that blends in with traditional sign programs. With a wide selection of frame profiles, graphic options, and decorative enhancements to choose from, FAI integrates well with any environment.

# RESULTS™

**PROVEN WAYFINDING SOLUTIONS.** RESULTS is a collection of interior signs designed for the healthcare environment. With design elements inspired by the *VA Signage Design Guide*, RESULTS is available in any 2/90 modular sign system platform and includes identification, wayfinding, life-safety, medical regulatory, and informational sign types.

**25286**  
GHC.SLD.01  
Room Number ID  
3" x 9"

**25287**  
Blood Draw  
GHC.SLD.02  
Department Room ID with SmartStrip  
13" x 10" (Insert area: 9" x 9")

**25288**  
Human Resources  
GHC.SLD.03  
Office Room ID with SmartStrip  
9" x 9"

**25289**  
Janitorial  
GHC.SLD.04  
Support Room ID  
6" x 9"

**25290**  
Patient Room ID with SmartStrip  
GHC.VTL.05  
Patient Room ID with SmartStrip  
7" x 8.5"

**25291**  
Double Patient Room ID with SmartStrip  
GHC.VTL.06  
Double Patient Room ID with SmartStrip  
11" x 8.5"

**25292**  
Conference Room  
GHC.SLD.07  
Conference Room ID with SmartStrip  
9" x 9"

**25293**  
Outpatient Conference Room  
GHC.SLD.08  
Exam Room ID with SmartStrip  
13" x 10.375" (9" x 9" Insert Area)

**24244**  
RESTROOM  
GHC.SLD.09  
Restroom ID  
19" x 10" (Insert area: 15" x 9")

**EXIT STAIR 11**  
Keep Door Closed  
GHC.SLD.10  
Regulatory Egress Stair ID  
9" x 9"

**STAIR 3 FLOOR 6**  
6  
Serves Floors 1-8  
Exit on Level 1 ↓  
No Roof Access  
GHC.SLD.11  
Regulatory Egress Stair Landing  
19" x 14"

**Fire & Emergency Exit Plan**  
In emergency do not use elevators. Use marked exits.  
GHC.SLD.12  
Evacuation Plan  
20" x 18"

**FLOOR 1**  
Check Out  
Patient Lounge  
Gift Shop  
Restroom  
Lobby  
GHC.SLD.13  
Small Directional  
12" x 20"

**FLOOR 1**  
Check Out  
Patient Lounge  
Gift Shop  
Restroom  
Lobby  
Pharmacy  
Urology  
Spinal Rehab  
Canteen  
West Wing  
GHC.SLD.14  
Large Directional  
35.5" x 23.375" (29" x 20" Insert Area)

**Cardiac Intervention Unit**  
GHC.SLD.15  
Perpendicular Room ID  
9" x 12"

**Canteen**  
**Spinal Rehab**  
GHC.SLD.16  
Large Overhead Directional  
8" x 80"

**Pharmacy**  
**Urology**  
**FLOOR 1**  
GHC.SLD.17  
Small Overhead ID  
6" x 40"

**EMERGENCY**  
GHC.SLD.17  
Small Overhead ID  
6" x 40"

**DO NOT ENTER**  
No Admittance  
GHC.FLX.18.1  
Regulatory Information  
9" x 9"

**CAUTION Biohazard**  
GHC.FLX.18.2  
Regulatory Information  
9" x 9"

**CAUTION Radiation Area**  
GHC.FLX.18.3  
Regulatory Information  
9" x 9"

**CAUTION Oxygen In Use No Smoking No Open Flame**  
GHC.FLX.18.4  
Regulatory Information  
9" x 9"

**No Smoking No Vaping**  
GHC.SLD.19  
Portrait Paper Holder  
12" x 8.5"

**Welcome**  
Clinic Hours  
Mon - Fri 7:00am - 6:00pm  
Sat 12:00pm - 5:00pm  
Sun Closed  
GHC.SLD.20  
Landscape Paper Holder  
10" x 11"

**Elevator**  
Serves Bldg 2J Floors 1&3 Only  
GHC.FLX.21  
Elevator Graphics  
9" x 34.75"

**PHARMACY**  
GHC.DIM.22  
Dimensional Letters  
6" x 37.7" x 3/8" depth

## PALETTES

**BE INSPIRED.** Choose from one of our palettes created for RESULTS or let 2/90 help you select a palette specific for your facility's needs. Patterns and images can be integrated to relate to a common theme, accent colors can be used for directional signs to demand attention, and soft neutral colors can be used for informational signs that wish to blend into the environment.



**25287**  
Blood Draw

**PATRIOT**

- 758 Navy Blue
- 708 Soft White
- 812 Artichoke
- 104 Brushed Natural
- 403 Cool Grey Paper
- 101 Satin
- Pattern - N.5 812 Artichoke
- American Flag Image



**25287**  
Blood Draw

**LIBERTY**

- 737 Burgandy
- 708 Soft White
- 809 Butternut
- 313 Rattan
- 413 Sand Paper
- 101 Satin
- Pattern - N.4 809 Butternut
- Statue of Liberty Image



**25287**  
Blood Draw

**FREEDOM**

- 780 Sage Green
- 714 Antique White
- 810 Mocha
- 312 Bamboo
- 423 Putty Paper
- 101 Satin
- Pattern - O.5
- Mountain Range Image



# EXTERIOR SIGNAGE

**YOU ONLY HAVE ONE CHANCE TO MAKE A POSITIVE FIRST IMPRESSION.** The patient experience begins upon arrival on campus, and an effective exterior signage program is critical to ensuring that experience is positive. Through thoughtful design, precision planning, and quality craftsmanship, your 2/90 exterior signage program will effectively communicate your branding and messaging to your visitors.

For many patients, navigating a campus environment, finding a parking space, locating the correct entrance, wayfinding to an appointment, and then retracing these steps back to a vehicle can be confusing and stressful. For this reason, 2/90 implements exterior signage programs with the entire patient experience in mind. Signage design, nomenclature, and coordination between interior and exterior signage programs is critical for a positive, holistic, patient experience.

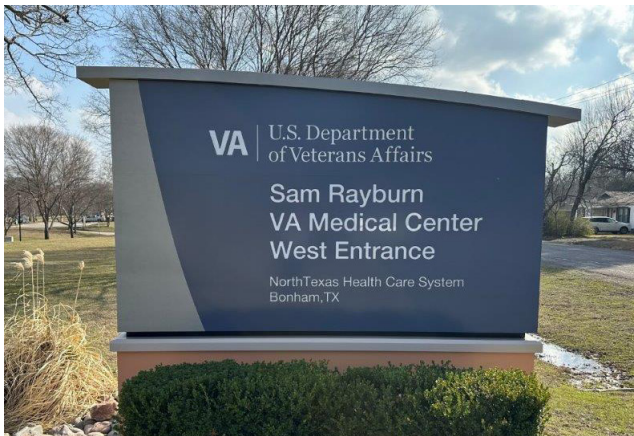
2/90 exterior signage is fabricated using engineered signage system componentry, state of the art paint technology and quality craftsmanship, providing excellent durability in all climates and environments. 2/90 will incorporate branding, building identification, parking lot identification, vehicular and pedestrian wayfinding, traffic control and regulatory messaging requirements into a comprehensive exterior signage program that will serve your facility for years to come.



**DALLAS VAMC**



**ANN ARBOR VAMC**



**BONHAM VAMC**



**MADIGAN ARMY MEDICAL CENTER**



**ST. LOUIS VAMC**





## INSTALLATION

**PROTECT YOUR INVESTMENT.** 2/90's factory-certified installation experts ensure that your signage investment is executed perfectly.

Installation teams work nationally and have extensive experience in active healthcare environments. By engaging proven installation methods for minimal facility disruption, be assured that your signage is installed with the upmost care and respect for your patients and staff.

Experience matters. 2/90 has it all covered with OSHA 30 certification, ICRA requirements, fall risk, ceiling permits, safety training, and enhanced PPE measures.



## MAINTENANCE

**SMARTCARE+ MAKES A DIFFERENCE.** SmartCare+ Maintenance Service is a thorough and efficient approach to signage maintenance. 2/90 provides personal, on-site reviews of your signage program to help you maintain your investment. We also support our signs with illustrated maintenance manuals and quick-ship programs that make reordering simple and fast.

## WE'RE HERE FOR YOU.

**TURNKEY WAYFINDING SOLUTIONS.** For more than 40 years, 2/90 has been providing solution-based architectural signage for our valued clients. We are the partner-of-choice to prestigious healthcare, corporate, education, and institutional facilities.

2/90 proudly offers comprehensive design and planning services, high-quality interior and exterior signage systems, full-service installation, and maintenance services, to implement effective wayfinding programs in the built environment.



**WANT RESULTS?** Contact 2/90 at 800.777.4310 or email [info@290signs.com](mailto:info@290signs.com). We will evaluate your current wayfinding program and offer solutions that create a positive experience for patients, visitors, and staff. Schedule an appointment today!

## SATISFIED GOVERNMENT HEALTHCARE CLIENTS.

### **PARTIAL CLIENT LIST**

Alvin C York VA Medical Center  
Ann Arbor VA Medical Center  
Augusta VA Medical Center  
Blanchfield Army Community Hospital  
Bonham VA Medical Center  
Butler VA Medical Center  
Captain James A. Lovell Federal Health Care Center  
Chillicothe VA Medical Center  
Coatesville VA Medical Center  
Dallas VA Medical Center  
Erie VA Medical Center  
Fargo VA Medical Center  
Garland VA Medical Center  
Indianapolis VA Medical Center  
Jesse Brown VA Medical Center  
John J Pershing VA Medical Center  
Kansas City VA Medical Center  
Kirk US Army Medical Health Clinic  
Langley Air Force Base Hospital  
Lexington VA Medical Center  
Lyster Army Health Clinic  
Madigan Army Medical Center  
Madison VA Medical Center  
Malcolm Grow Medical Clinics and Surgery Center  
Mike O'Callaghan Military Medical Center  
Milwaukee VA Medical Center  
Moncrief Army Health Clinic  
Nashville VA Medical Center  
Naval Medical Center San Diego  
Peterson Air Force Base Clinic  
Pittsburgh VA Medical Center  
Saginaw VA Medical Center  
Sam Rayburn Memorial Veterans Center  
Sheridan VA Medical Center  
Sioux Falls VA Medical Center  
St Louis VA Medical Center  
Tomah VA Medical Center  
US Air Force Academy Clinic  
Walter Reed National Military Medical Center  
West Palm Beach VA Medical Center  
Wright-Patterson Air Force Base Medical Center