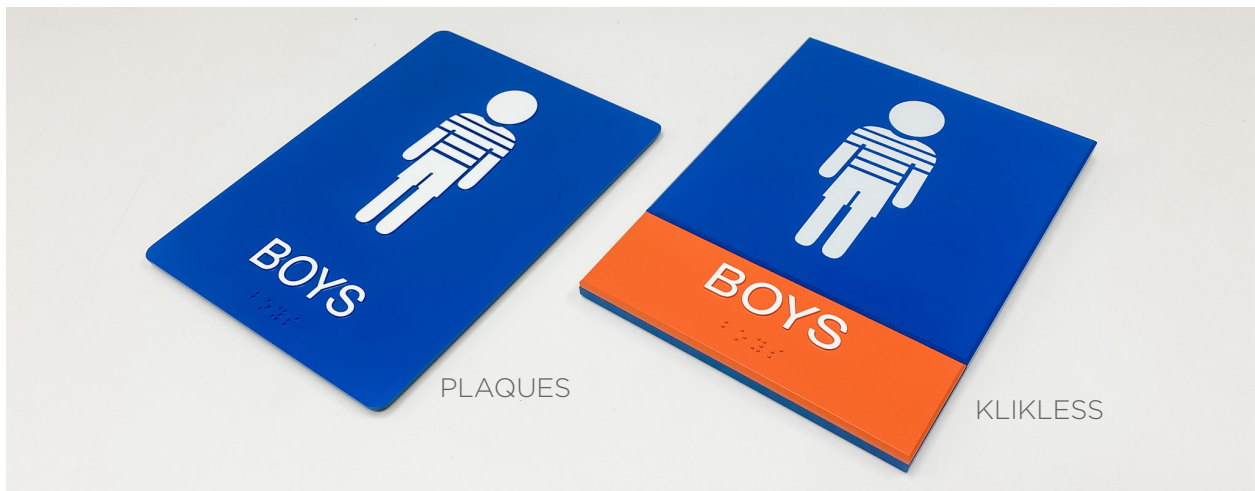




K-12
EDUCATION

FACILITY SIGNAGE

KLICKLESS[®]
PLAQUES[™]



QUESTIONS? WE HAVE ANSWERS.

Let 2/90 Sign Systems design a comprehensive wayfinding plan for your school.

TODAY THERE ARE MORE QUESTIONS THAN EVER, and 2/90 has the answers. Our dynamic solutions create a positive environment for students, visitors, and staff. They make navigating hallways or an entire campus simple and provide an attractive way to promote school spirit. 2/90 has offered a systems approach to signage since 1978. When message changes occur, simply replace inserts rather than entire signs. However, some signs rarely change. To complement our modular signage, 2/90 offers non-changeable signage for permanent messaging, helping clients meet budgetary requirements.

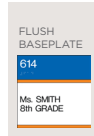
2/90 Sign Systems' K-12 offering includes two non-system sign options, KlikLess and Plaques. KlikLess is an economical alternative to 2/90's Klik Modular Sign System. Signs have the look and feel of their Klik counterparts though inserts are permanently attached to baseplates. The paper insert option allows for limited changeability. Plaques are another alternative solution to provide a cost-effective way to identify, inform, regulate, and direct.



B-9123
ADA Room ID
2" x 8.5"



EDU.KL.01
ADA Room ID w/
Changeable Paper ID
9" or 6" x 6"



EDU.KL.02.C
FLUSH
BASEPLATE
614
Ms. SMITH
8th GRADE

EDU.KL.02
ADA Room ID w/
Changeable Paper ID
9" or 6" x 6"

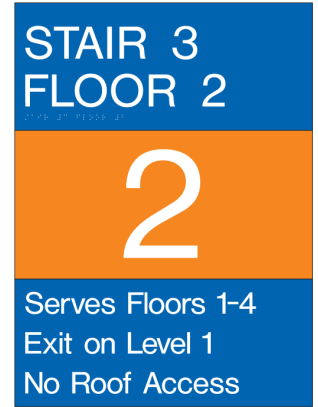
EDU.KL.03
ADA Room ID
w/ Symbol
8" x 6"



EDU.KL.04
ADA Room ID
w/ Symbol
9" x 8.5"



EDU.KL.06
Direct Print Info
8" x 8.5"



EDU.KL.05
ADA Stairwell
19" x 14"



EDU.KL.07
Changeable Paper Info
12" x 8.5"



EDU.KL.08
Header w/ Changeable Paper Info
15" x 17"



EDU.KL.09
Wall Mount Wayfinding
8" x 17"



EDU.KL.10
2-Sided Perpendicular Mount Wayfinding
6" x 14"



EDU.KL.11
2-Sided Overhead Mount Wayfinding
8" x 34"



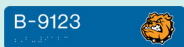
EDU.KL.12
Room ID Tag
1.5" x 6"



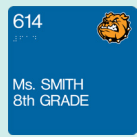
EDU.KL.13
Direct Print Info
6" x 6"

PLAQUES™

A more cost-effective sign solution for non-changeable messages.



B-9123
ADA Room ID
2" x 8.5"



EDU.PL.01
ADA Room ID
2" x 8.5"

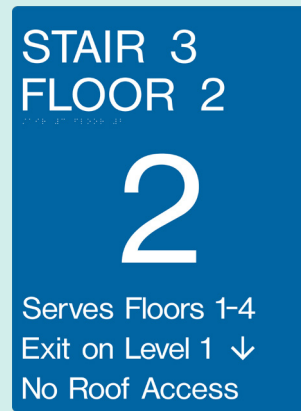
EDU.PL.02
ADA Room ID
6" x 6"



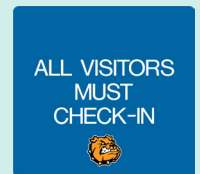
EDU.PL.03
ADA Room ID w/
Symbol
8" x 6"



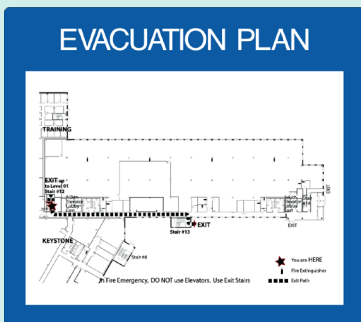
EDU.PL.04
ADA Room ID w/
Symbol
9" x 8.5"



EDU.PL.05
ADA Stairwell
19" x 14"



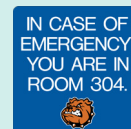
EDU.PL.06
Direct Print Info
8" x 8.5"



EDU.PL.08
Direct Print Info
15" x 17"



EDU.PL.09
Wall Mount Wayfinding
8" x 17"



EDU.PL.10
Room ID Tag
1.5" x 6"

EDU.PL.11
Direct Print Info
6" x 6"



EDU.PL.07
Direct Print Info
12" x 8.5"

WE'RE HERE FOR YOU.

TURNKEY WAYFINDING SOLUTIONS. 2/90 Sign Systems knows how to get people from A to B. We've been doing this for over 45 years! Simply provide us your school's floorplan and we will develop a plan to communicate your building's wayfinding program. Our turnkey wayfinding solutions make us a preferred vendor for education, healthcare, corporate, hospitality, and government clients.

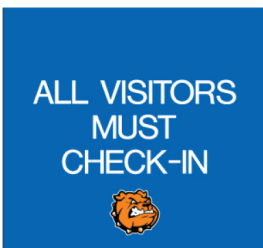


SATISFIED EDUCATION CLIENTS.

PARTIAL CLIENT LIST

Alpine School District
Aquila Elementary School
Chicago Public Schools
Davis School District
Doyle Rider Elementary
East Lansing Public Schools
Federica Academy
Fenton Charter School
Fitzgerald Public Schools
Friendship Academy
Grand Rapids Public Schools
Kalamazoo Public Schools

Laingsburg Community Schools
Mary McDowell Friends School
Moab Middle School
Nebo School District
Park Spanish Immersion School
Peter Hobart Elementary School
Randolph School District
San Juan School District
Susan Lindgren Elementary School
The Westminster Schools
West Bloomfield Middle School



WE'VE GOT ANSWERS!

Contact 2/90 at 800.777.4310 or email info@290signs.com. 2/90 will evaluate your current wayfinding program and offer solutions that create a positive experience for students, staff, and visitors. Schedule an appointment today!



5350 CORPORATE GROVE BLVD SE
GRAND RAPIDS, MI 49512 | 3.23

800.777.4310 | 290SIGNS.COM